

Load King Signature Series 55 Ton 18" LDH Hydraulic Detach



Tapered Gooseneck & Dual Hydraulics

- Dual Hydraulics allow operator to use tractor wet kit or 13 hp Honda IGX Integrated Throttle & Choke
- Pony motor mount built into gooseneck for easy installation



- Front sill is angled for easier connection of air and electric lines
- Keeps pony motor hydraulic lines out of tractor 5th wheel grease
- If the operator has neck too low when unhooking from the trailer, the glad hands and hydraulic fittings do not hit the tractor frame and break off

Gooseneck Lengths & Swing Clearance



- 10'-9" Gooseneck offers 84" swing clearance
- 12'-0" Gooseneck offers 96" swing clearance
- 12'-9" Gooseneck offers swing clearance of 86" & 110"
- High Relief Gooseneck
- Low-Profile High Relief scraper neck 33 1/2" from deck to slope on gooseneck
- Cylinders are protected in the base of the gooseneck

Tapered Gooseneck

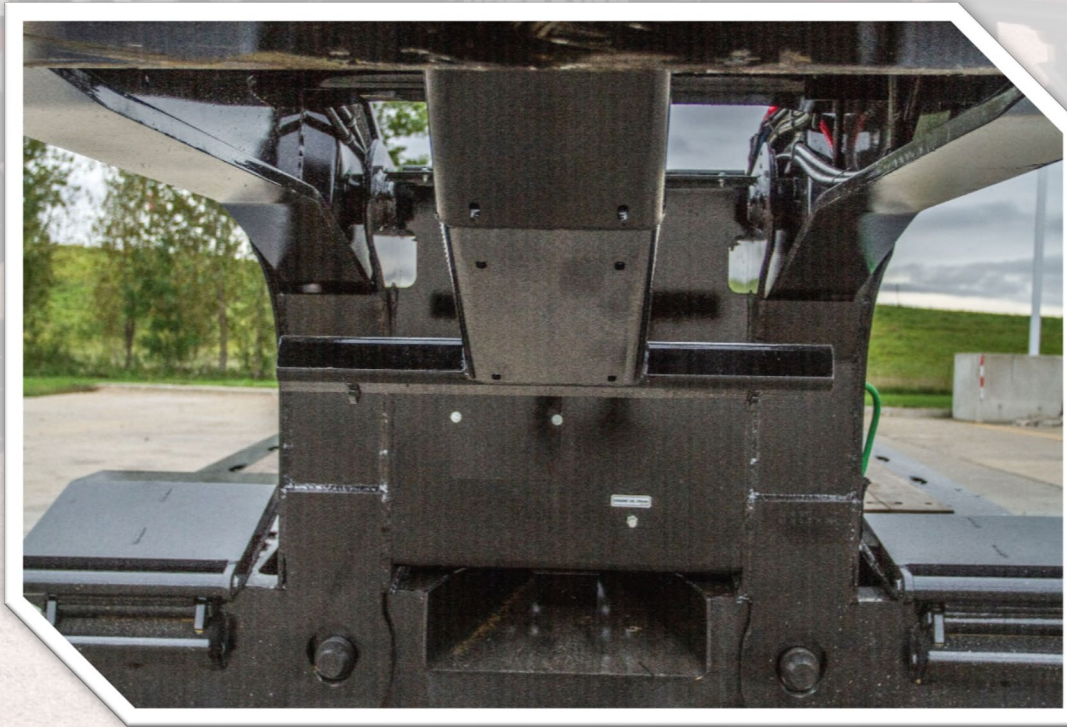
- Front Taper is extended and at a slightly lower angle ensuring Air, Electric & Hydraulics are free of damage if the neck is too low when unhooking



- All Glad-hands have filter inserts keeping them free of bugs and other foreign objects

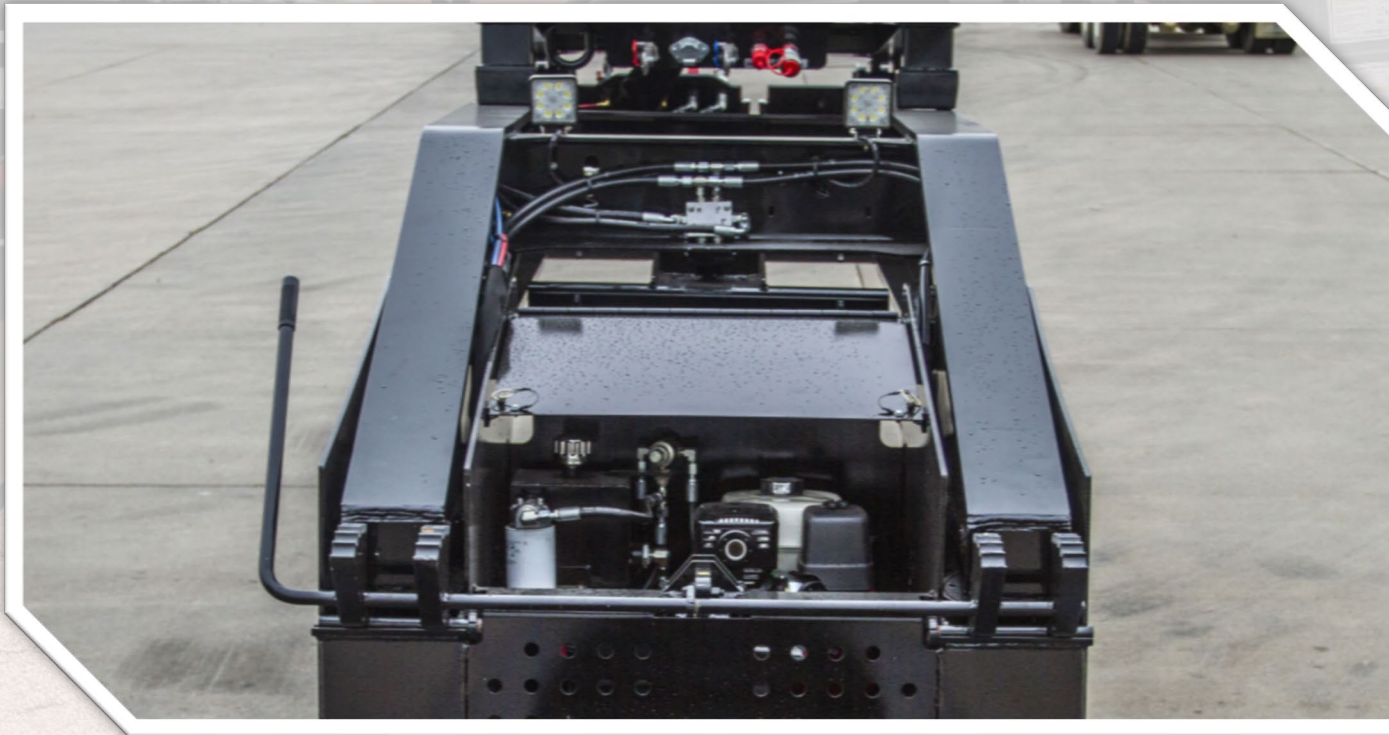


Heavy Duty Frame Jack w/Alignment Cleats



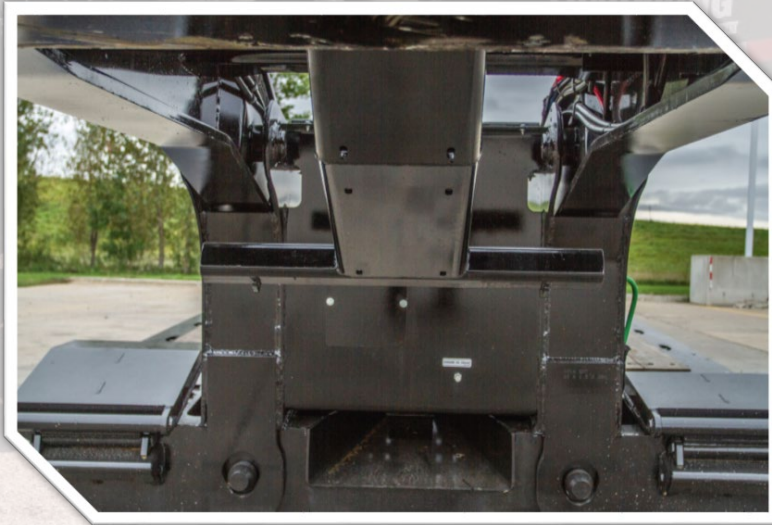
- Frame jack rests on truck frame without the use of dunnage
- Cleats on base of frame jack keep the neck from shifting side-to-side during detach

Work Lights on Gooseneck



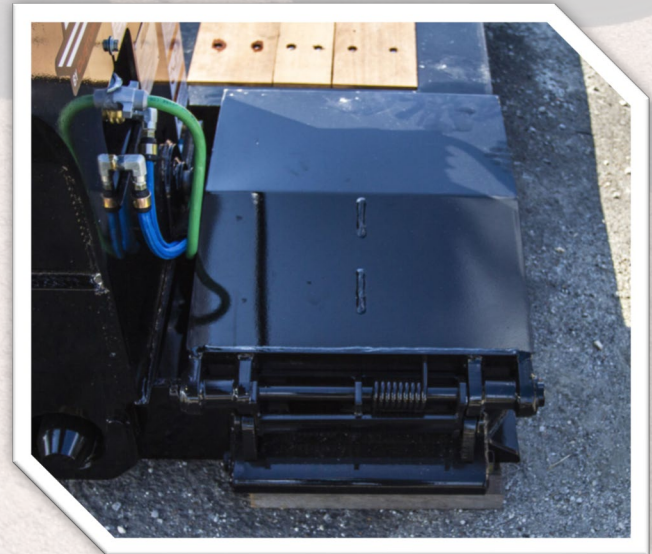
- Allows operator to work safely at night
- Able to lay forward if carrying a load that sits over the gooseneck
- LED Lights
- Toggle switch on side of gooseneck

Heavy Duty Spring Assist Front Flip Ramps Wide Angled V-Trough



- Heavy duty front flip ramps
- Upper flange reinforcement at angled approach w/5 traction bars

- 25 1/2" Self aligning V-trough, allows for easy hook-up
- Self locking air operated locking pin ensures positive lock when re-attaching gooseneck
- When gooseneck is locked into desired ride height a slide bar is locked over the locking pin to ensure the pin cannot be released during transport



Front Deck Approach Angle



- Front approach is boxed from upper to lower flange incorporating the clearance light and flag holder adding structural integrity
- The front 70 inches of the beam is tapered on the bottom providing a larger foot print and better load angle

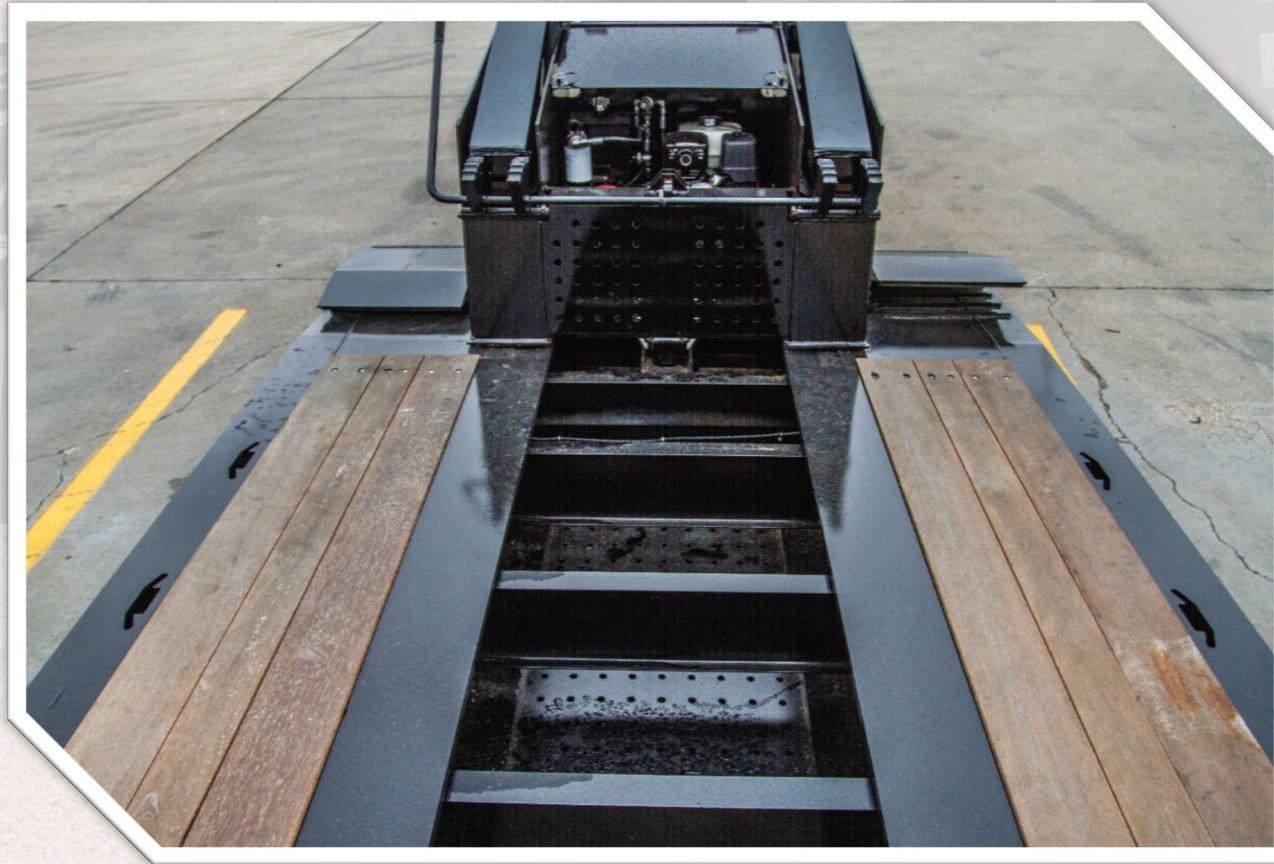
Multiple Position Ride Height Recessed Air & Electrical

- Quick connects w/detents on airlines ensure they cannot be reversed or release during transport
- Air & electric lines have protective sleeves to protect against wear during transport and when placing the lines in the base of the trailer when disconnecting the gooseneck



- Ratchet design allows alternate 5th wheel heights as well as alternate deck heights and ground clearances for off road terrain or low overhead clearances
- Air & electric lines are recessed into the base of the gooseneck for protection

60 in. Pierced Steel Plate Dunnage Storage



- 60 in. Pierced steel plate at front deck for chain, binder & dunnage storage
- Heavy duty steel that will stand up to the punishment.
- More attractive than wire mesh and lasts longer

Chain Slots 1 5/8 in. Apitong Decking



- 1 5/8 in. Apitong decking in addition to utilizing carriage bolts and clips on the ends w/only 1 row of deck screws, makes our deck significantly stronger than the competition
- Spring loaded safety latches on each out-rigger to keep them from coming out during transport

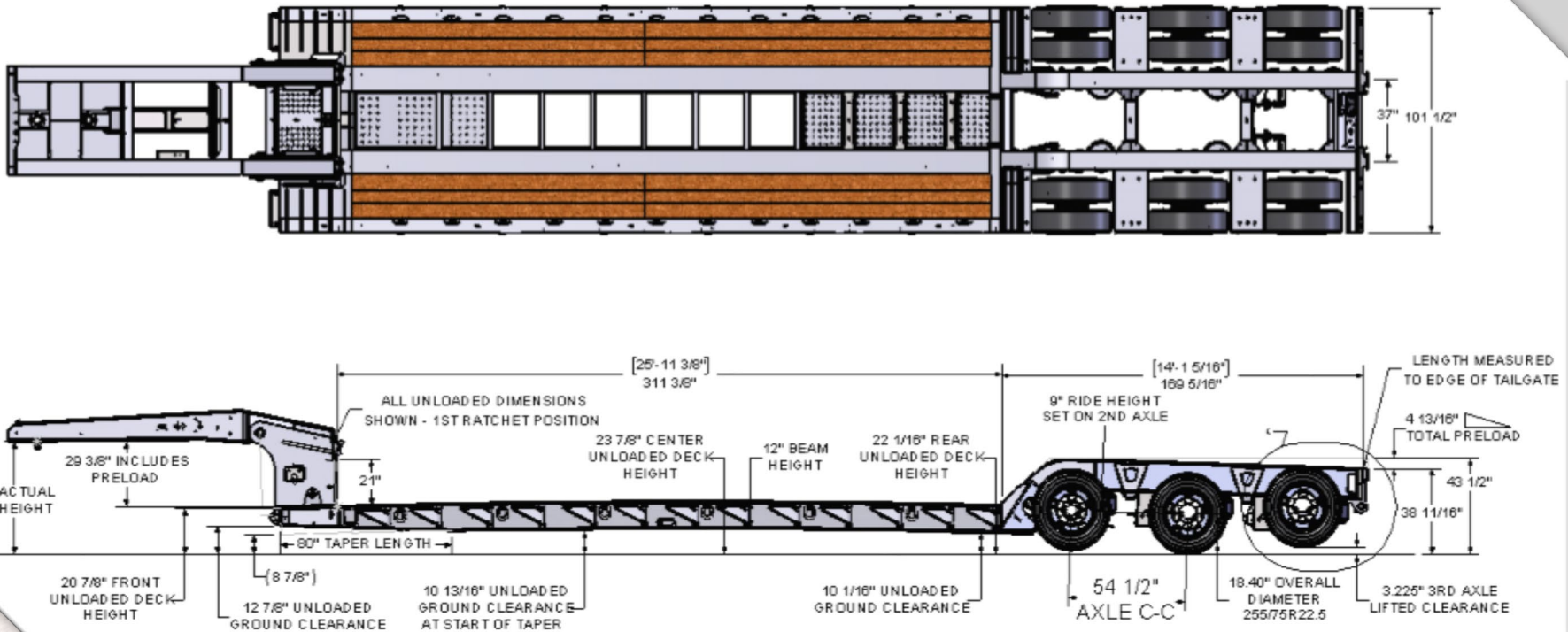
- Full Depth Out-Riggers tied into the upper and lower flanges
- 13 Pair chain slots in outer flanges for increased options for load securement
- 6 Bent D-Rings per side

Wide Load Package



- Angled gussets at the bottom of every 10 in. cross member welded to the outer webs and lower flange which support the web from deflecting when heavy loads are on the out-riggers
- Outer beam structural integrity isn't diminished by bowing and deflection
- Wiring is ran above the inside beam lower flange and protected with rubber grommets. Additional connections every 12 inches ensure a secure and protected system that cannot be matched by clips
- Carriage bolts & Clips for securing the deck

Top & Side View 503/554 SS SF 18" LDH



- Shown with 4" auxiliary cross members in outer bays, providing additional strength and increased deck life
- Full Depth Out-Riggers tied into the upper & lower flanges w/spring loaded locks to hold them in place during transport when not in use

Bucket Well & Open Boom Trough

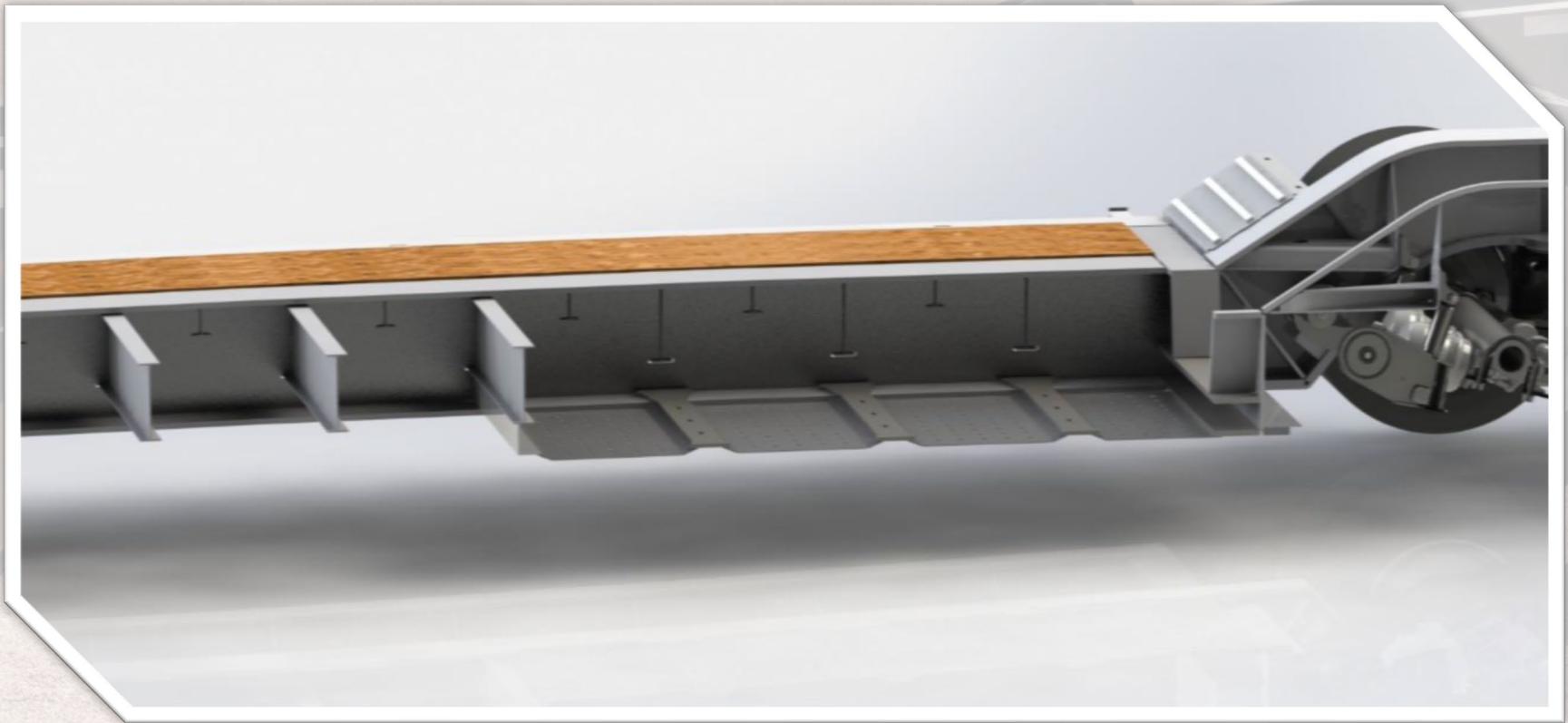


- Last 8 ft. recessed with 11 ga. pierced steel plate at lower flange, allows the operator to lower the stick, resulting in lower overall height
- Lowered cross members in sub-frame allows for lower overall height
- High volume air tank is tucked below the cross member in sub-frame preventing damage to the tank and open access throughout the boom trough

Top View of New Design for Bucket Well

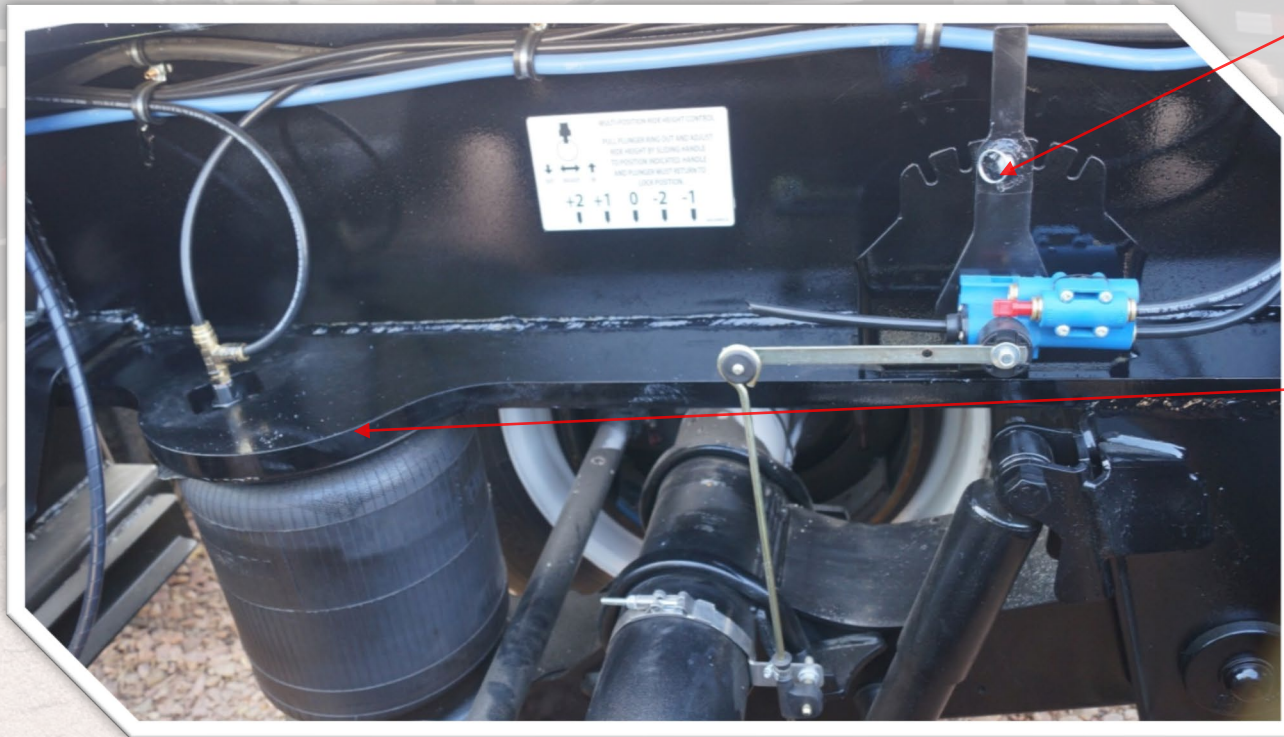


Bucket Well Continued



- Last 8 ft. recessed with pierced steel plate with 3/4" corrugations every 24" bringing it flush with the top of the lower flange with 1/2" steel plate laid otop tied into the lower flange allowing 4 inches of additional clearance in the bucket well, resulting in lower over-all height when hauling excavators

Manual +3 / -3 Valve, Air Bag Support



- Manual +3 / -3 valve enables operator to manually adjust the height directly from the leveling valve with ease
- Valve is secured to lower flange in sub-frame providing easy access
- Lower flange is cut to support the top of the air bags to prevent the upper bell on the air bag from breaking, resulting in downtime and costly repairs

New Design for Manual +3/-3 Valve



- Manual +3 / -3 valve enables operator to manually adjust the height directly from the leveling valve with ease
- Valve is secured to lower flange in sub-frame providing easy access
- *New Design is more compact keeping the handle & release virtually flush with upper and lower flange.*

Rear Bolsters



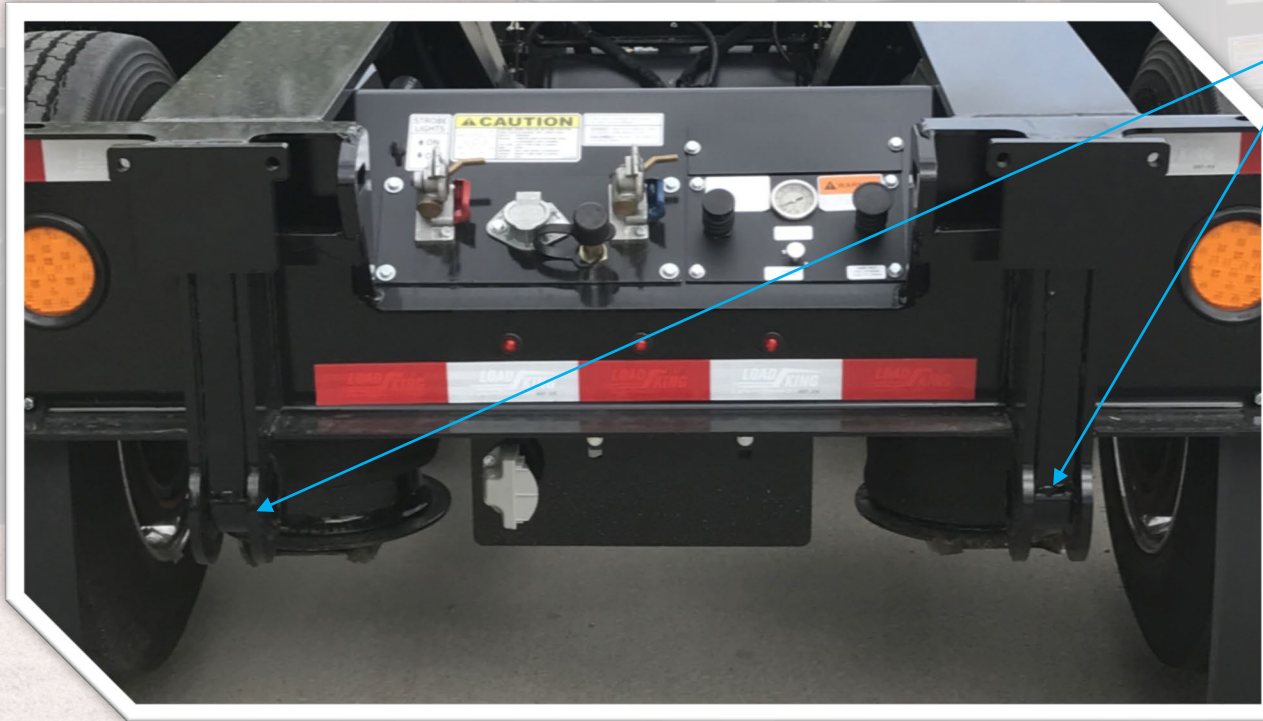
- Rear Bolsters are full depth from top flange to lower flange providing additional structural integrity
- Chain slots incorporated into the outside of the bolster
- Will also accept end for 2" Strap

Tapered Rear Box for Air, Electric and Controls



- Glad hands & 7-way are angled for easy hook-up and lines don't get kinked causing restrictive air flow
- Lift axle switch is push / pull and protected in a weather proof jacket
- Manual raise & lower valve is push / pull for height adjustment and protected in a weather proof jacket, a small switch is used for on/off functionality
- Rear strobe switch is at the rear of the trailer and also protected in the angled box

Flip Axle & Spreader Bar Attachments



- Attachment for flip axle and spreader bar, horizontal pin connection and shim plate on top for moving weight back

Rear Tailgate & Controls



- Rear Tailgate has been notched allowing the operator to attach the air & electric lines to the flip axle with no obstructions and without having any bends in the air lines causing decreased air pressure issues and pre-mature failures to the air lines
- All controls to include the glad hands do not extend above the top flange of the main beams
- Rear Panel incorporates all functions and also allows for additional 4-way plug and Air-Weigh digital Scale
- Grote Micro-Nova lights are used for all clearance lights and center cluster of 3 are "Dual Intensity"

Features & Benefits

- 110,000 lb. Load rating in 12 ft. vs. 16 ft.
- 1 5/8" net Apitong decking secured by carriage bolts and clips for increased strength
- Wide Load Pkg. - Angled gussets at every cross member tied into the cross-member flange and out-side beam web
- Tapered front gooseneck – ease in hooking up air, electric and hydraulic lines
- High Relief – Scraper style gooseneck (load scrapers w/o having to block to clear gooseneck)
- Tapered rear box for air, electric and controls for manual raise & lower valve and lift axle
- 27,500 lbs. axles with 3/4 in. walls vs. 22,500 lb. or 25,000 lb. axles with 1/2 or 5/8 in. walls
- *All Glad-hands are techtran brand with filter inserts*
- *All air & electric, both on the gooseneck and rear tailgate are designed with the operator in mind with the proper spacing allowing for easy hook-up*
- *Air & Electric lines are secured above the lower flange of the inside main beam keeping them protected from the road and weather to ensure the best protection available in the industry*
- *Chain slots in the main deck allow for both 1/2" and 3/8" chain*
- *Pre-paint process – grit blast entire surface and remove all imperfections prior to paint*
- *PPG- 2 Part polyurethane with epoxy primer and baked at 150 degrees*